



Larchmont Yacht Club

June- July 2020 Handicap Regatta Series

June 14, June 27 and July 4, 2020

1st Amendment To the NOTICE OF RACE and SAILING INSTRUCTIONS

2 ENTRY & FEES – is replaced with

- 2.1 The regatta is open to boats sailing under PHRF Regulations with Double Handed, Plus One, or fully-crewed up to a maximum of 10. Viper, Shields, IODs, Etchells and S-Boats are invited to race. The race committee may break the fleet into classes each day. ***All boats are reminded of their social distancing and mask requirements; see NoR/SI 11 COVID-19 PROTOCOLS***
- 2.2 Eligible boats may enter by completing the on line entry form https://larchmontyachtclub.formstack.com/forms/2020_preseason_handicap and submitting their current YRALIS PHRF rating to the race committee before 0800 on the day of any race. Plus One shall use their regular PHRF rating. Viper, Shields, IODs, Etchells, S-Boats and any other boat without a rating will be assigned YRALIS PHRF base ratings for their class.
- 2.3 There is no entry fee for this series.

5 COMMUNICATIONS ON THE WATER

The committee will communicate on the water via VHF 78A, and may be repeated by loud-hailer.

6 COURSES AND MARKS

See attached revised Addendum which includes new mark “R” to the list of government marks.

7 START AND FINISH is replaced with

- 7.1 Starts will be as per Appendix U, Audible-Signal Racing System, as modified below. Unless otherwise announced, the start signal will be the warning for the next class.

<i>Signal</i>	<i>Sound Signal</i>	<i>Time Before Start</i>
Attention	Series of short sounds	Before the 1 st warning
Warning	1	5 minutes
Preparatory	1	4 minutes
	1 Long	1 minute
Start	1	0

- 7.2 The start/finish line will be between a staff displaying an orange flag on the signal vessel and an orange flag or inflatable buoy at the opposite end.
- 7.3 Boats whose preparatory signal has not been made shall stand clear of the starting area and all boats whose preparatory signal has been made.
- 7.4 A boat that starts later than 10 minutes after her starting signal will be scored DNS without a hearing. This changes rules A4 and A5.
- 7.5 The race committee will attempt to hail OCS boats by their sail number on VHF channel 78A. The timing and order of such hails or the failure of a competitor to hear the hail will not be grounds for redress. Flag X will not be displayed. This changes RRS 62.1(a).
- 7.8 The time limit for the first boat in a division to sail the course and finish will be 3 hours. Boats that fail to finish within 90 minutes after the first boat in her division sails the course and finishes will be scored “Time Limit Expired” (TLE). This changes rule 35.

Mark Dailey
Principal Race Officer

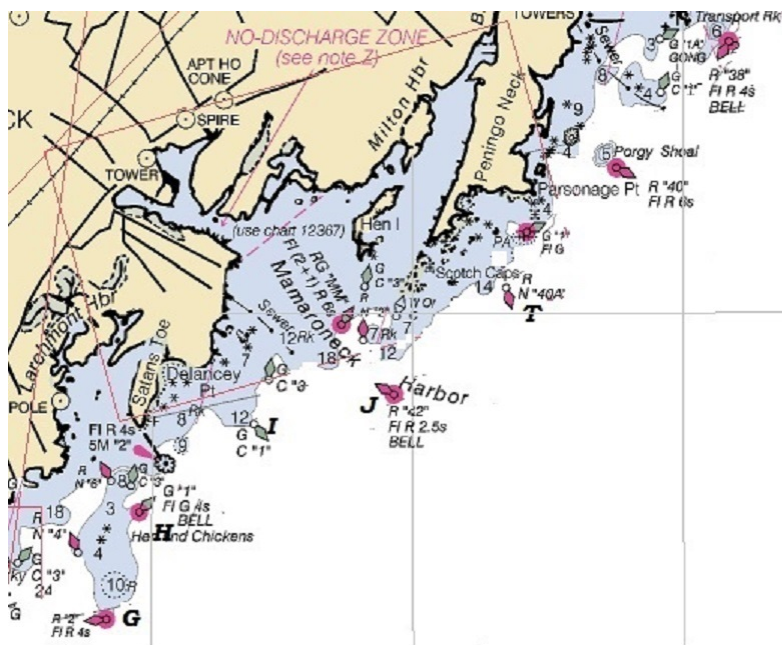
2000, June 24, 2020
Time and Date Posted

Addendum – List of Marks

Letter Code	Approximate Location	Description	LAT	LON
			(Degrees, decimal min.)	
H - hotel	Hen & Chickens	G "1" Fl G 4s BELL	40° 54.8'	73° 44.1'
G - golf	South of Hen & Chickens	R "2" Fl R 4s	40° 54.2'	73° 44.3'
F - foxtrot	North of Execution Rock	G C "1"	40° 53.5'	73° 44.2'
R – romeo	SW of Execution Rock	RG N	40° 52.5'	73° 44.6'
E - echo	Prospect Point	G "23" Fl G 4s GONG	40° 52.7	73° 43.0'
D - delta	East of Prospect Point	R N "2"	40° 52.5'	73° 42.7'
C - charlie	East of Prospect Point	R N "4"	40° 52.2'	73° 42.0'
Y - yankee	Off Weeks Point (Long Island)	G C "1"	40° 52.7'	73° 39.5'
Z - zulu	Mott Point	R "6" Bell	40° 51.6	73° 40.4
X - xray	Matinecock Point	G "21" Fl G 4s GONG	40° 54.6	73° 38.2
O - oscar	Oak Neck Point	C "19" Green Can	40° 55.5'	73° 34.2'
L - lima	Lloyd Point	G "15" FL G4s GONG	40° 57.7'	73° 29.3'
S - sierra	Mid Sound	R "32A" FL R 2.5s Bell	40° 58.1'	73° 32.8'
P - papa	Cows	R "32" FL R 6s Bell	41° 00.2'	73° 31.4'
M - mike	Off Manursing Island	R "36" Bell	40° 58.1	73° 38.8
T - tango	Off Peningo Neck	R N "40A"	40° 56.1'	73° 41.3'
J - juliett	Off Mamaroneck Harbor	R "42" Fl R 2.5s BELL	40° 55.5'	73° 42.2'
I - india	East of Larchmont Breakwater	G C "1"	40° 55.3'	73° 43.3'

In addition to the government marks the race committee may use one inflatable mark, which will be designated *mark* "A" (*Alpha*). If the race committee uses mark "A" it will announce its approximate location on the VHF communication channel.

See also chartlet on following page



Not for Navigation.
Some data missing
or not precise.

Marks L, M, O, P & S
are off this chart to
the east and north-
east.

