



# LARCHMONT YACHT CLUB

## YRA One Design Distance Race

September 5, 2020

### Amendment #3

to the

### 2020 YRALIS Mid-Sound One-Design Sailing Instructions


#### 2 NOTICES TO COMPETITORS AND CHANGES IN SAILING INSTRUCTIONS

- 2.2 Changes to the sailing instructions or notices to competitors will be posted on the club's website no later than 1000 on September 5. Oral changes may be made on the water via VHF 78A and receiving acknowledgement from each boat

#### 4 SCHEDULE OF RACES

- 4.3 Is changed to: The first warning signal for all classes is t 1425

#### 5 DIVISION FLAGS is replaced with:

The Division flag for all classes will be numeral pennant 9 

#### 7 THE COURSE is replaced with

- 7.1 No later than the warning signal the race committee will announce the course via vhf 78A
- 7.2 Course - From the start off Larchmont Harbor to green gong "23" off Prospect Point, to nun ER off the southwest end of Execution Rocks Shoal, then to the finish. All rounding marks shall be left to starboard. Hen and Chickens South red "2" shall be observed. See Appendix B for area chart.

#### 8 MARKS is replaced with

The race will be around government marks. See the Appendix A for a list of all marks and Appendix B for Area chart B

#### 9 THE START

- 9.1 Starts will be as per Appendix U, Audible-Signal Racing System, as modified below.

<i>Signal</i>	<i>Sound Signal</i>	<i>Time Before Start</i>
Attention	Series of short sounds	Before the 1 <sup>st</sup> warning
Warning	1	5 minutes
Preparatory	1	4 minutes
1 Minute	1 long	1 minute
Start	1	0

- 9.2 The starting line will be between a staff displaying an orange flag on the signal vessel at the starboard end and an orange flag or inflatable buoy at the port end.
- 9.3 A boat that starts later than 10 minutes after her starting signal will be scored DNS without a hearing. This changes rules A4 and A5.
- 9.4 Any re-commencement of the starting sequence will be preceded by repetitive sounds and an announcement on Ch 78A approx. 1 minute prior to the warning signal. Boats are reminded to stay within range of the starting area

#### 12 TIME LIMIT

The time limit will be 3 ½ hours. Boats not finishing by that time will be scored Time Limit Expired (TLE). This modifies rule 35.

#### **14 SCORING**

- 14.1 is changed to: A boat's daily score will be the total of her race scores without exclusion. Time allowances will be computed using the YRA of LIS Base PHRF ratings and time on distance.

#### **20 COVID-19 PROTOCOLS ADD**

Skippers and crews shall comply with the Club's current Covid-19 Protocols, as posted on the Club's website. A breach of this rule shall not be grounds for protest by a boat. This changes RRS 60.1(a).

#### **FURTHER INFORMATION add:**

For further information please contact the Regatta Committee, Larchmont Yacht Club, 1 Woodbine Ave., Larchmont, NY 10538. Telephone 914-468-7716. Fax 914-468-7751.

Website: [www.larchmontyc.org](http://www.larchmontyc.org).

Email: [racecommittee@larchmontyc.org](mailto:racecommittee@larchmontyc.org)

John May & Mark Dailey– Regatta Co-Chairs

John May – Principal Race Officer

*John May*

Principle Race Officer

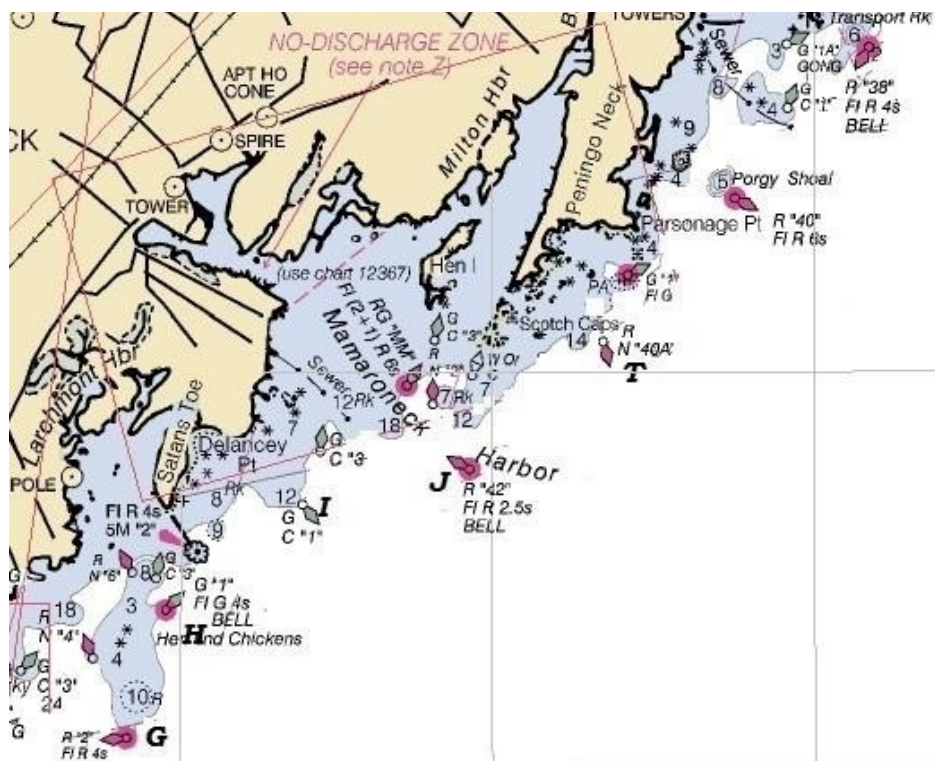
2130 Sept 3, 2020

Time & Date Posted

# APPENDIX A

			LAT	LON
Letter Code	Approximate Location	Description	(Degrees, decimal min.)	
H - hotel	Hen & Chickens	G "1" Fl G 4s BELL	40° 54.8'	73° 44.1'
G - golf	South of Hen & Chickens	R "2" Fl R 4s	40° 54.2'	73° 44.3'
F - foxtrot	North of Execution Rock	G C "1"	40° 53.5'	73° 44.2'
ER	Southwest of Execution Rock	RG N	42° 52.4	73° 44.5
E - echo	Prospect Point	G "23" Fl G 4s GONG	40° 52.7	73° 43.0'
D - delta	East of Prospect Point	R N "2"	40° 52.5'	73° 42.7'
C - charlie	East of Prospect Point	R N "4"	40° 52.2'	73° 42.0'
Y - yankee	Off Weeks Point (Long Island)	G C "1"	40° 52.7'	73° 39.5'
Z - zulu	Mott Point	R "6" Bell	40° 51.6	73° 40.4
X - xray	Matinecock Point	G "21" Fl G 4s GONG	40° 54.6	73° 38.2
O - oscar	Oak Neck Point	C "19" Green Can	40° 55.5'	73° 34.2'
L - lima	Lloyd Point	G "15" FL G4s GONG	40° 57.7'	73° 29.3'
S - sierra	Mid Sound	R "32A" FL R 2.5s Bell	40° 58.1'	73°32.8'
P - papa	Cows	R "32" FL R 6s Bell	41°00.2'	73°31.4'
M - mike	Off Manursing Island	R "36" Bell	40° 58.1	73° 38.8
T - tango	Off Peningo Neck	R N "40A"	40° 56.1'	73° 41.3'
J - juliett	Off Mamaroneck Harbor	R "42" Fl R 2.5s BELL	40° 55.5'	73° 42.2'
I - india	East of Larchmont Breakwater	G C "1"	40° 55.3'	73° 43.3'

In addition to the government marks the race committee may use one yellow inflatable mark, which will be designated mark "A" (Alpha). If the race committee uses mark "A" it will announce its approximate location on the VHF communication channel.



**Not for Navigation.**  
Some data missing  
or not precise.

**Marks L, M, O, P & S**  
are off this chart to  
the east and north-  
east.

