



Larchmont Yacht Club

ONE HUNDRED TWENTY-FIRST RACE WEEK

Saturday, July 13, Sunday, July 14, Saturday, July 20, Sunday, July 21, 2019

CRUISING BOATS

For PHRF and Offshore One Design Racer-Cruisers and Non-Spinnaker Boats

ONE-DESIGN CLASSES

**Including: Shields Long Island Sound Western District Regatta
Saturday, July 13, Sunday, July 14, 2019**

Sailing Instructions

1 RULES

- 1.1 The regatta will be governed by the *rules* as defined in *The Racing Rules of Sailing*.
- 1.2 Rule V1, Penalty at the Time of an Incident, will apply.
- 1.3 Appendix T, Arbitration, will apply as changed below:
After the last sentence of Appendix T4, Arbitration Meeting Outcomes, add: If a protest hearing is held, the arbitrator will not be a member of the panel that hears the protest but will be permitted to observe the testimony presented and offer evidence. This changes rule 63.3(a).
- 1.4 For PHRFNS boats competing with a minimum of 55% (round up) of their crew under the age of 16 years as of July 15, 2019, electric winches may be used. This changes rule 52.
- 1.5 Each boat shall carry a radio capable of transmitting and receiving on VHF channel 73 and 78A

2 NOTICES TO COMPETITORS AND CHANGES IN SAILING INSTRUCTIONS

- 2.1 Notices to competitors will be posted on the official notice board located on the veranda of the main clubhouse. Copies will also be available at the hospitality desk during the event.
- 2.2 Changes to the sailing instructions will be posted by 1100 on the day they take effect.

3 SIGNALS MADE ASHORE

- 3.1 Signals made ashore will be displayed from the main flagpole.
- 3.2 Flags AP over F with 2 sounds (1 when lowered) means: "The race is postponed for Cruising and One-Design Boats. The first warning will be made not less than 60 minutes after Flags AP over F are lowered." The hoist and lowering will be announced on VHF 73 and on VHF 78A.

4 SCHEDULE

- 4.1 The Classes and Circles will be run as follows:

Saturday, July 13, Sunday, July 14, and Saturday, July 20

- On the Red Circle (See SI 6 for location) J/105, J/70, PHRF I, PHRF II, and PHRF Non-Spinnaker classes.
- On the Green Circle (See SI 6 for location) Viper 640, Etchells, IOD, Shields classes
- All races will be Windward/Leeward, except the PHRF Non-Spinnaker class will have a Navigator's course (see SI 7)
- Starting sequence for the first race of the day will be posted on the Scratch Sheet on YachtScoring.com

Sunday, July 21

- On the Red Circle (See SI 6 for location), PHRF, PHRF Non Spinnaker, and Viper 640 classes and any other class(es) that wishes to race in the Execution Rocks Race.
- On the Green Circle (See SI 6 for location), Etchells, IOD, Shields, J/105 and J/70 classes, unless the class opts to sail in the Execution Rocks Race. For this circle, all races will be Windward-Leeward.

- 4.2 On Windward-Leeward courses, the race committee intends to run multiple races each day. The number of races conducted each day is at the sole discretion of the race committee.
- 4.2 The first warning signal will be at **1255** each day. Classes may not be started as listed on the scratch sheet after the first race.

5 CLASS FLAGS AND CHECK-IN

- 5.1 Class flags will be:

Class Flag 1 (one) – Viper 640
Class Flag 2 (two) – Etchells
Class Flag 3 (three) – International One-Design
Class Flag 4 (four) – Shields
Class Flag 5 (five) – *not used*
Class Flag 6 (six) – J/105
Class Flag 7 (seven) – PHRF Spinnaker I boats
Class Flag 8 (eight) – PHRF Spinnaker II boats
Class Flag 9 (nine) – J/70
Class Flag 0 (zero) – PHRF Non-Spinnaker boats.

- 5.2 PHRF boats shall display the numeral pennant for their division approximately 6-8 feet up on the backstay or, if the boat has no backstay, the starboard shrouds.
- 5.3 Before the first warning each day, each boat shall check in by sailing past the signal vessel, hailing her sail number and receiving acknowledgement from the race committee.

6 RACING AREAS

The locations below are the general area for the red and green circles on various days. The signal boat may be toward one side of the circle, depending on the winds. Signal boats will attempt to broadcast their position on their VHF channel once anchored.

Please note: there will be a circle running races for the S-Boat Centennial Regatta just easterly from the Larchmont Breakwater Light. Please stay clear of those racers when transiting the area.

On Saturday, July 13, Sunday, June 14, and Saturday, July 20

The Red Circle will be located about 2 to 3 miles, approximately ESE of the Larchmont Breakwater Light. The signal vessel will display a red flag.

The Green Circle will be located about 1 to 2 miles, approximately SSE of the Larchmont Breakwater Light. The signal vessel will display a green flag.

On Sunday, July 21

The Red Circle signal boat will be the signal boat for the Executions Rocks Race. It will be positioned off the mouth of Larchmont Harbor (see SI 7.3, below)

The Green Circle signal boat will be located about 1.5 to 3 miles, approximately SE of the Larchmont Breakwater Light.

7 COURSES

7.1 **Windward-Leeward Courses** No later than the warning signal, the race committee signal vessel will display the approximate distance and compass bearing and the number of legs to be sailed..

Windward-Leeward course numbers designate:

- 2 - windward, finish to leeward
 - 3 - windward, leeward, finish to windward
 - 4 - windward, leeward, windward, finish to leeward
 - 5 - windward, leeward, windward, leeward, finish to windward
- The leeward mark will be approximately 100 yards to windward of the starting line. Gates may be set instead of a leeward mark.
 - Boats sailing on the green circle will have an offset mark at the windward mark, to be observed when rounding the weather mark. If the weather mark is a change mark (see SI 10) there will be no offset.
 - All marks shall be rounded to port, except if gates are used.

7.2 Navigator's Courses

Courses designated as follows:

- 71 – Consisting of 3 legs- marks E, M, Finish – approx. 12.5 nm
 - 72 - Consisting of 3 legs – marks G, E, Finish – approx. 6 nm
 - 73 - Consisting of 2 legs – mark O, Finish – approx. 11 nm
 - 74 - Consisting of 2 legs – mark S, Finish – approx. 15 nm
 - 75 - Consisting of 4 legs - marks M, X, E, Finish – approx. 10.5 nm
 - 76 – Consisting of 3 legs – marks X, E, Finish – approx. 8.5 nm
- All marks shall be left to port in courses 71 through 74 and to starboard in courses 75 and 76.
 - The race committee may reverse the order of rounding government marks by flying code flag “R” on or before the first warning and announcing the reversal on VHF 73.
 - In addition to the government marks the race committee may use one pink inflatable mark, which will be designated **mark “A” (Alpha)**. If the race committee uses mark “A” it will announce its approximate location on VHF 73.

See Addenda A and B for a description of marks, location and chart.

7.3 Execution Rocks Race

Course 1- from the start off Larchmont Harbor to green gong “23” off Prospect Point, to nun RG off the southwest end of Execution Rocks Shoal, then to the finish. All rounding marks shall be left to starboard. Hen and Chickens South red “2” shall be observed. The race committee may reverse the course and have all rounding marks left to port by flying code flag “R” on or before the first warning and announcing the reversal on VHF 73. See Appendix B for area chart.

Course 2 - a longer course from the start off Larchmont Harbor to green gong “23” off Prospect Point, to Gong G1 off Hart Island, then to the finish. All rounding marks shall be left to starboard. Hen and Chickens South red “2” shall be observed.

The race committee may reverse the course and have all rounding marks left to port by flying code flag “R” on or before the first warning and announcing the reversal on VHF 73.

8 MARKS

8.1 Original marks will be orange inflatables . Offset mark will be orange ball buoys.

8.2 A new mark, as provided in SI 10, Changing the Next Leg of the Course, will be a yellow inflatable.

9 THE START

- 9.1 The starting line will be between a yellow flag on the signal vessel and a staff on a buoy displaying a yellow flag.
- 9.2 Boats whose warning signal has not been made shall avoid the starting area during the starting sequence for other races.
- 9.3 A boat that does not start within 5 minutes after her starting signal will be scored Did Not Start (DNS) without a hearing. This changes RRS A4 and A5.
- 9.4 The race committee will endeavor to identify recalled boats by broadcasting their sail numbers over VHF (see SI 17.1). Failure of a boat to hear her recall notification or the order of boats recalled shall not be grounds for redress.
- 9.5 On windward-leeward courses, if two or more classes have fewer than five boats participating on a day, the race committee may combine their starts, but not for the first race of the day. In this case, both class flags will fly as the warning signal. Classes will be scored separately.
- 9.6 All classes will start at the same time for the Execution Rocks Race. The warning flag for that race will be flag E (Echo).

10 CHANGE THE NEXT LEG OF THE COURSE

To change the next leg of the course, the race committee will lay a new mark (or move the finish line) and remove the original mark as soon as practicable. When a subsequent new mark is replaced, it will be replaced by an original mark.

11 THE FINISH

The finish will be between an orange flag on the signal vessel and a staff on a buoy displaying an orange flag, for Windward-Leeward and Navigator races. For the Execution Rocks Race, the finish will be between an orange flag on the signal vessel and the course side of Bell 1 at the entrance to Larchmont Harbor.

12 TIME LIMITS

- 12.1 **Windward/Leeward** course - time limit for the first boat in a division to sail the course and finish a race if the course is 6 miles or less will be 2 ½ hours.
The time limit for the first boat in a division to sail the course and finish a race if the course is more than 6 miles will be 3 ½ hours.
Boats that fail to finish within 30 minutes after the first boat in that division sails the course and finishes will be scored "Time Limit Expired" (TLE). This changes rule 35.
- 12.2 **Distance Race** -The time limit for the first boat in a division to sail the course and finish will be 4 hours.
Boats that fail to finish within 1 hour after the first boat in her division sails the course and finishes will be scored "Time Limit Expired" (TLE). This changes rule 35.
- 12.3 **Execution Rocks Race** - The time limit for the first boat to sail the course and finish will be 1600.
Boats that fail to finish within 1 hour after first boat in their division sails the course and finishes will be scored "Time Limit Expired" (TLE). This changes rule 35.

13 WITHDRAWAL

A boat that retires from a race or that does not intend to start a scheduled race shall promptly report this to the race committee boat via hailing or on the designated VHF channel.

14 PROTESTS

- 14.1 A boat intending to protest for an incident while racing is requested to notify the race committee promptly upon finishing the race by VHF or by hailing the committee boat after finishing.
- 14.2 Protest forms are available at the front desk.

- 14.3 The protest time limit for each circle on July 13, 14 and 20 is 60 minutes after the RC finish vessel personnel for that circle come ashore. The protest time limit for each circle on Sunday, July 21 is 90 minutes after the last boat on that circle sails the course and finishes. Written protests and requests for redress shall be delivered to protest desk on the 2nd floor of the main clubhouse.
- 14.4 The protest time limit and a list of protests and requests for redress submitted to the protest desk will be posted promptly.
- 14.5 Parties to a hearing and their witnesses should remain in the protest area. If they are not available when called, they may not be heard.
- 14.6 Hearings and arbitration will begin as soon as practicable after protest forms are filed at the protest desk.

15 SCORING

- 15.1 One completed race constitutes a series.
- 15.2 A boat's series score will be the total of her race scores without exclusion.
- 15.3 For PHRF, time allowances will be computed using Time on Time.
- 15.4 A boat scored TLE will be given 2 points more than the number of finishers in her division, except that she will not be scored worse than DNF.

16 PRIZES

- 16.1 Series prizes for the Shields 2019 Long Island Sound Western District Regatta will be awarded following the completion of racing on Sunday, July 14.
- 16.2 For classes that have three competitors or more, first, second and third place series prizes and perpetual prizes will be awarded on Sunday, July 21 following the completion of racing on the front lawn of the Larchmont Yacht Club.
- 16.3 Perpetual trophies will be awarded at the discretion of the race committee, including fastest elapsed time in the Execution Rocks Race, and fastest corrected time in the Execution Rocks Race.
- 16.4 A team that sets a new elapsed time course record in the Execution Rocks Race will receive a case of Mt. Gay Rum. The current elapsed time record is 39 minutes 51 seconds, set by yacht *Christopher Dragon* on July 23, 2017. If course 2 is used, the boat establishing the elapsed time record for that race will receive the case of Mt. Gay Rum.
- 16.5 This regatta is a qualifying event for the YRA Youth Challenge Cup, the Gitano, Sappho, Competitors, Kings Point and Allegra Knapp Mertz awards.

17 RADIO COMMUNICATION

- 17.1 Except in an emergency, or to meet the requirements SI 13 and 14.1, a boat that is racing shall not make voice or data transmissions and shall not receive voice or data communication that is not available to all boats.
- 17.2 The race committee will communicate with competitors on VHF channels: 73 for the red circle, and 78A for the green circle

18 DISCLAIMER OF LIABILITY

Competitors are reminded of the Disclaimer of Liability to which they agreed as stated in the notice of race.

19 FURTHER INFORMATION

For further information please contact the Race Committee, Larchmont Yacht Club, 1 Woodbine Ave., Larchmont, New York 10538. Telephone: 914-468-7716 Fax: 914-468-7751

Website: www.larchmontyc.org Email: racecommittee@larchmontyc.org

John May - Regatta Committee Chairman

Jan K. Smeets and Nicholas Langone - Event Principal Race Officers

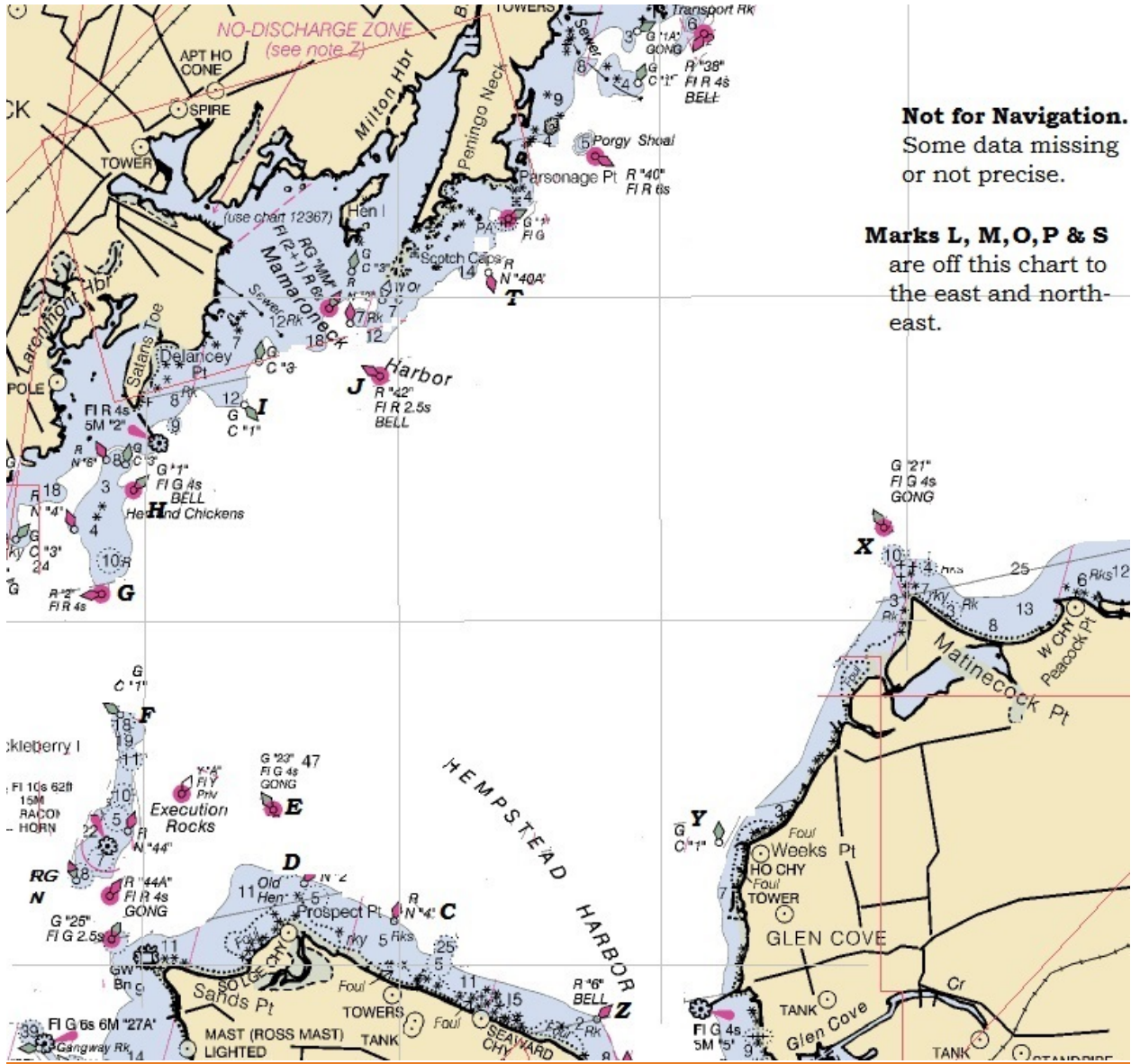
Mary M. Savage - Protest Committee Chairman

Addendum A

Letter Code	Approximate Location	Description	LAT (Degrees, decimal min.)	LON
H - hotel	Hen & Chickens	G "1" Fl G 4s BELL	40° 54.8'	73° 44.1'
G - golf	South of Hen & Chickens	R "2" Fl R 4s	40° 54.2'	73° 44.3'
F - foxtrot	North of Execution Rock	G C "1"	40° 53.5'	73° 44.2'
E - echo	Prospect Point	G "23" Fl G 4s GONG	40° 52.7	73° 43.0'
D - delta	East of Prospect Point	R N "2"	40° 52.5'	73° 42.7'
C - charlie	East of Prospect Point	R N "4"	40° 52.2'	73° 42.0'
Y - yankee	Off Weeks Point (Long Island)	G C "1"	40° 52.7'	73° 39.5'
Z - zulu	Mott Point	R "6" Bell	40° 51.6	73° 40.4
X - xray	Matinecock Point	G "21" Fl G 4s GONG	40° 54.6	73° 38.2
O - oscar	Oak Neck Point	C "19" Green Can	40° 55.5'	73° 34.2'
L - lima	Lloyd Point	G "15" FL G4s GONG	40° 57.7'	73° 29.3'
S - sierra	Mid Sound	R "32A" FL R 2.5s Bell	40° 58.1'	73°32.8'
P - papa	Cows	R "32" FL R 6s Bell	41°00.2'	73°31.4'
M - mike	Off Manursing Island	R "36" Bell	40° 58.1	73° 38.8
T - tango	Off Peningo Neck	R N "40A"	40° 56.1'	73° 41.3'
J - juliett	Off Mamaroneck Harbor	R "42" Fl R 2.5s BELL	40° 55.5'	73° 42.2'
I - india	East of Larchmont Breakwater	G C "1"	40° 55.3'	73° 43.3'

In addition to the government marks the race committee may use one pink inflatable mark, which will be designated **mark "A" (Alpha)**. If the race committee uses mark "A" it will announce its approximate location on the VHF communication channel.

Addendum B



Not for Navigation.
Some data missing or not precise.

Marks L, M, O, P & S
are off this chart to the east and north-east.